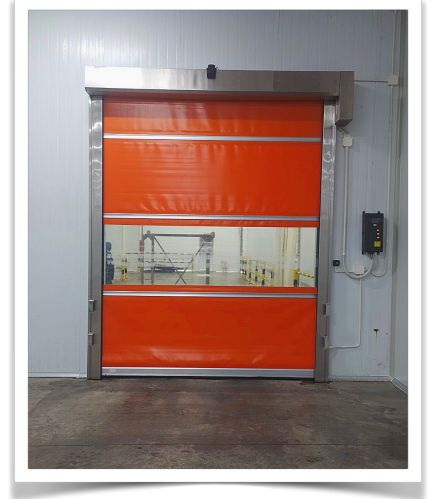


High Speed Door

*Perfect thermal and sound insulation
Without limiting the transit people*



Install: internal/external -



Install: internal -

Technical data

- Moter brand. : SEW-Eurodrive, MFZovitor
- Power supply. : 1-phase 220V, 50Hz or 3-phase 380V,50Hz
- Inverter control panel: SIEMENS
- Protect of electric. : IP55
- Encoder. : Revolving Encoder
- Opening speed. : 0.8m/s -1.2m/s, adjustable
- Closing speed. : 0.8m/s, adjustable
- Wind resistance : Class 2-3 (demand dimensions)
- Structured material : Frame and cover box - 304 stainless steel/Galvanized steel
- Curtain sheet. : Polyester fabric coated PVC, self-extinguishing class 2, 900gr/m2 (0.8mm - 1.2mm)
Transparency window PVC 1.5mm thickness
Wind reinforcing bar - steel tube or aluminium
- Frequency operator. : 800 cycles/day (2minute/cycle)
- Safety : Photocell sensor, wireless airbag edge safety
- Opening. : Push wall (option: radard sensor, falcon sensor, loop sensor, pull cord swicth
- Maximum door size. : Modular curtain model max.size up to 4000 x 4000mmH
Classic model max.size up to 6000 x 6000mmH
- Operating lie. : 800.000 - 1.500.000 cycles /guarrantee 6 year if run 800 cycles/day
- Working temperature : -25oC to 60oC

SCOPE OF APPLICATION



INDUSTRY TRANSPORT LOGISTICS AUTOMOTIVE M.PROTECTION CLEAN ROOM SUPERMARKET FOOD ATEX