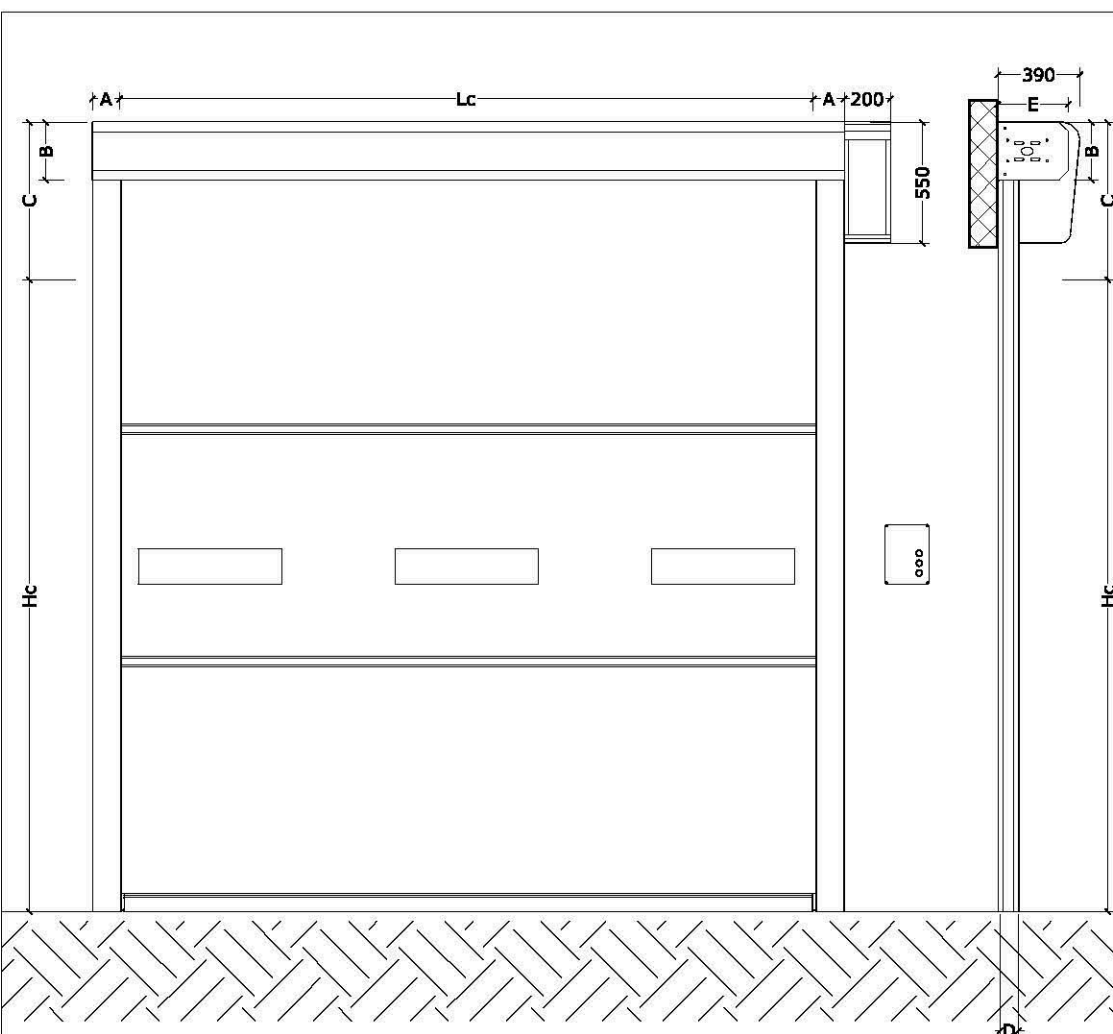


PVC Roll Up Door Mod. MOD. KV-FR.Smart

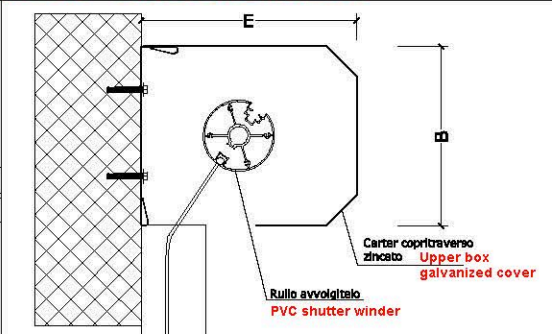
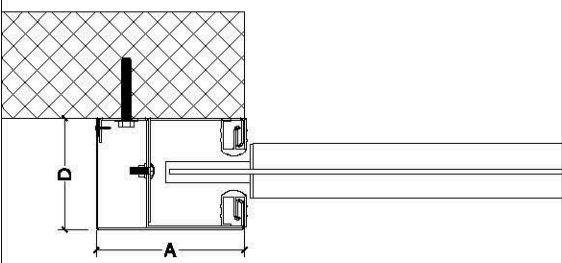
Data sheet:

- *Top frame, made by galvanized sheet steel. Supporting plates bolted to fix: flanged bearings, motor-reducer and curtain winding shaft, made by aluminum tube, diam. 100 mm. with relative slot for pvc shutter fabric fixing.*
- *Upper frame steel galvanized carter (optional), to cover the total upper roll assy.*
- *Vertical R/L side frames, made by galvanized steel, suitably shaped just to cover wall door fastenings. Double rubber material side gaskets, nylon upper guides, and side passages for internal electric wirings.*
- *Roll up shutter (wind resistance: 85 Kg. / sqmts.) with special KOPRON design, made by different sections, consisting of rugged bi-coated ripstop fabric type PVC fire-resistant Class II material, fitted with special reinforcement profiles. Into the mantle can be added anti UV transparent CRISTAL material portholes, with thickness 1 mm.*
- *Aluminum bottom profile with lateral nylon guides, and double lip seal, shaped to accommodate the safety bottom edge.*
- *Intensive use motor-reducer (opening and closing speed: up to 1 / mt.sec.), mounted directly to the upper shaft, composed by: electrical motor of appropriate power 400 V, 3 ph., electric brake and special limit-switches, coupled with worm reducer permanently lubricated type. Emergency maneuver crank (if required).*
- *CE standard control panel with programmable electronic technology, with openable front door; provided with main power lockable switch, up-down-stop buttons. Possibility to connect all types of controls, safety devices, traffic lights and interlocks, automatic closing management, and partial opening.*
- *Standard safety equipment: N ° 1 pair of photocells in steerable beam + 1 flashing LED light + safety bottom edge.*
- *STANDARD COLORS of pvc shutter: SILVER (Silver) - ANTRAX (Anthracite) - LIGHT GREY (light gray).*
- *CERTIFICATION: conform to the standard product UNI EN 13241-1*

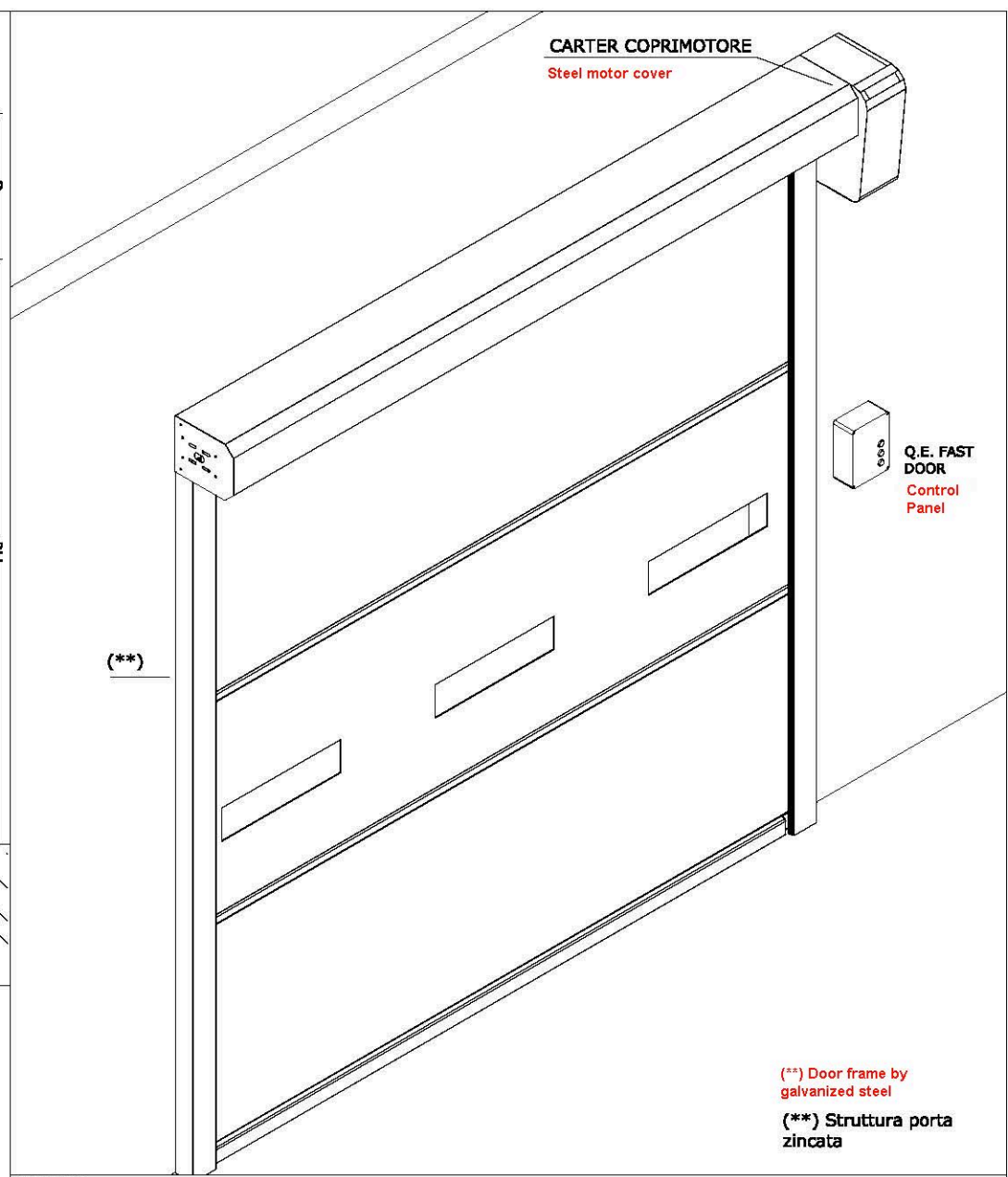


PARTICOLARE MONTANTE UPPER FRAME **PARTICOLARE TRAVERSO**

VERTICAL FRAME



L. MONTANTE QUOTA A	H TRAVERSO QUOTA B	QUOTA C	PROFONDITA' MONTANTE QUOTA D	PROFONDITA' TRAVERSO QUOTA E
120 mm Dim. "A"	300 mm Dim. "B"	500 mm Dim. "C"	90 mm Dim. "D"	300 mm Dim. "E"



(**) Door frame by galvanized steel

(**) Struttura porta zincata

DESCRIZIONE **PORTA AD ARROTOLAMENTO RAPIDO - FAST ROLL SMART ROLL UP PVC DOOR "SMART" SERIES**

DATA 23/11/2015 DISEGNATORE Giuseppe Bisceglie SCALA varie

POSIZIONE FILE

LOGISTIC SOLUTIONS



Kopron SpA - Via I Maggio SN - 20084 Gorgonzola (MI) t: +39 02 82152.1 - f: +39 02 82152.821 - kopron@kopron.com - www.kopron.com

La società Kopron SpA si riserva la proprietà del presente disegno con il divieto di riprodurlo o renderlo noto a terzi senza la propria autorizzazione scritta.

